

Letter to the Editor: Orthostatic Reactivity in Patients with Ischemic Stroke in the Chronic Period. OA Maced J Med Sci. <http://dx.doi.org/10.3889/oamjms.2015.090>

Danche Vasileva*

University "Goce Delchev", Faculty of Medical Sciences, Shtip, Republic of Macedonia

Respected Editor-in-Chief,

Citation: Vasileva D. Letter to the Editor: Orthostatic Reactivity in Patients with Ischemic Stroke in the Chronic Period. OA Maced J Med Sci. 2015 Sep 15; 3(3):528-530. <http://dx.doi.org/10.3889/oamjms.2015.090>
<http://dx.doi.org/10.3889/oamjms.2015.094>

Key words: Orthostatic reactivity; Kinesitherapy; Neurorehabilitation; Neurodevelopment treatment; Ischemic stroke; Chronic period.

***Correspondence:** Miss Danche Vasileva. University "Goce Delchev", Faculty of Medical Sciences, Krste Misirkov no. 10-A, Shtip 2000, Republic of Macedonia. E-Mail: danche.vasileva@ugd.edu.mk

Received: 20-Aug-2015; **Online first:** 21-Aug-2015

Copyright: © 2015 Danche Vasileva. This is an open access article distributed under the terms of the Creative Commons Attribution License, which permits unrestricted use, distribution, and reproduction in any medium, provided the original author and source are credited.

Competing Interests: The authors have declared that no competing interests exist.

I am writing you about our publication Orthostatic Reactivity in Patients with Ischemic Stroke in the Chronic Period, published OnlineFirst in OA Maced J Med Sci on August 01, 2015 [1].

Tables and Figures are not adequate for this publication, because they are from the previously published paper Orthostatic Reactivity in Patients with Diabetic Neuropathy. OA Maced J Med Sci. 2014 Jun 15; 2(2):244-248 [2].

I am sending you correct Tables and Figures and ask you to correct them, if possible. Previous Tables and Figures were attached by mistake.

I would be very grateful if you can correct them.

1. Vasileva D, Lubenova D, Mihova M, Grigorova-Petrova K, Dimitrova A. Orthostatic Reactivity in Patients with Ischemic Stroke in the Chronic Period. OA Maced J Med Sci. <http://dx.doi.org/10.3889/oamjms.2015.090>
2. Orthostatic Reactivity in Patients with Diabetic Neuropathy. OA Maced J Med Sci. 2014 Jun 15; 2(2):244-248. <http://dx.doi.org/10.3889/oamjms.2014.039>

Danche Vasileva,
University "Goce Delchev",
Faculty of Medical Sciences,
Shtip, Republic of Macedonia

Table 1: Mean values, standard deviation, the highest and lowest values of descriptive characteristics by: age, weight and height of the patients studied, assessments of the stage of functional recovery according Brunnstrom and the test for spasticity according Ashworth, at the beginning of the study

Parameters	Age	Weight	Height	Brunnstrom - upper limb	Brunnstrom - lower limb	Ashworth - upper limb	Ashworth - lower limb
X±S _D	63.2±8.8	77.9±10.1	169.2±6.4	4.2±0.7	4.8±0.6	1.6±0.6	1.1±0.5
Xmax	76	101	182	5	6	3	2
Xmin	40	60	152	3	4	1	0

Table 2: Mean values, standard deviations, the largest and smallest data values of heart rate during orthostatic test in two (SOR and HOR) study groups before and after kinesitherapy distributed in classification by Thulesius

Parameter	Groups	SOR				HOR			
		at beginning	10 th day	1 st month	3 rd month	at beginning	10 th day	1 st month	3 rd month
Lying position 1 1 min		81.4±6.1	79.5±5	78.5±5	78.5±5	85.6±9.6	84.6±6.4	83.3±6.4	83.3±6.4
	Xmax	88	88	88	88	96	92	90	90
	Xmin	70	72	70	70	65	72	70	70
5 min		80±5.1	77.5±4.8	76±4.9	76±4.9	83±8.8	82±6.6	79.5±5.7	79.5±5.7
	Xmax	86	85	84	84	94	90	88	88
	Xmin	72	70	69	69	63	68	68	68
10 min		79.6±4.9	77.1±4.3	75.6±5.1	75.6±5.1	82.4±9	81.6±7.4	79.1±5.9	79.1±5.9
	Xmax	86	80	84	84	94	90	88	88
	Xmin	82	70	68	68	62	65	67	67
Standing position 1 min		105.5±5.9	95.5±6.2	88.7±4.9	88.7±4.9	109.7±8.8	103.9±6	92.8±7	92.8±7
	Xmax	111	108	98	98	119	115	100	100
	Xmin	95	86	82	82	90	94	78	78
5 min		100.6±6.8	91.3±6	85.8±4.6	85.8±4.6	102.9±9.8	98.8±6	88.3±6.1	88.3±6.1
	Xmax	108	102	94	94	115	108	96	96
	Xmin	90	80	80	80	88	88	76	76
10 min		98.5±7.3	89.9±6.1	84.3±4.5	84.3±4.5	101.3±10.1	97.2±5.2	86.7±6.8	86.7±6.8
	Xmax	106	102	90	90	110	106	94	94
	Xmin	88	80	80	80	85	88	72	72
Lying position 2 1 min		92.1±7	84.3±3.4	79.6±4.6	79.6±4.6	94.2±7.6	92.1±6.3	82.9±7.2	82.9±7.2
	Xmax	100	96	88	88	100	98	90	90
	Xmin	82	74	72	72	75	78	68	68
5 min		87.8±8	4.3±6.2	77±5.1	77±5.1	89.5±7.8	86.5±7.2	79.9±6.4	79.9±6.4
	Xmax	98	88	86	86	96	95	86	86
	Xmin	72	70	70	70	70	70	65	65
10 min		86.8±7.7	78.5±5.3	76±4	76±4	88±7.5	84.8±6.2	78.8±6.1	78.8±6.1
	Xmax	96	84	82	82	96	90	86	86
	Xmin	72	69	70	70	70	70	65	65

Table 3. Mean values, standard deviations, the largest and smallest data values of systolic blood pressure during the orthostatic test in two (SOR and HOR) study groups before and after kinesitherapy, distributed classification by Thulesius

Parameter	Groups	SOR				HOR			
		At beginning	10 th Day	1 st Month	3 rd Month	At beginning	10 th Day	1 st Month	3 rd Month
Lying position 1 1 min		141.6±8.6	135.8±5.8	131.2±5.9	131.2±5.9	147.1±9.9	144.6±10	138.7±7	138.7±7
	Xmax	155	145	140	140	160	155	145	145
	Xmin	130	130	120	120	130	125	130	130
5 min		139.1±7.4	132±5.6	128.7±3.6	128.7±3.6	143.6±9.5	140.5±10.2	136.9±7.1	136.9±7.1
	Xmax	150	140	135	135	155	150	145	145
	Xmin	125	125	120	120	128	120	125	125
10 min		140±7.2	132±5.6	128.7±5.5	128.7±5.5	144±9.8	140.5±10.2	136.3±6.9	136.3±6.9
	Xmax	150	140	135	135	155	150	145	145
	Xmin	125	125	125	125	128	120	125	125
Standing position 1 min		131.2±10	126.6±7.8	125±7.2	125±7.2	165.1±9.4	144±15.6	134.9±12.4	134.9±12.4
	Xmax	145	135	135	135	175	165	155	155
	Xmin	110	115	115	115	150	115	120	120
5 min		135.4±10.7	128.7±6.6	125.8±4	125.8±4	158.7±8.3	143.1±12.1	136.8±9.1	136.8±9.1
	Xmax	155	140	130	130	170	155	150	150
	Xmin	120	120	120	120	145	120	125	125
10 min		136.2±10.4	128.7±6.6	125.8±4	125.8±4	158±9.4	143.1±12.1	135.6±10.9	135.6±10.9
	Xmax	155	140	130	130	170	155	150	150
	Xmin	120	120	120	120	140	120	120	120
Lying position 2 1 min		137.5±6.7	125.4±5.6	125±4.6	125±4.6	151.9±8.8	137.8±11.5	131.2±8.3	131.2±8.3
	Xmax	145	140	135	135	165	150	145	145
	Xmin	125	120	120	120	135	120	120	120
5 min		140±6.2	125±4.6	124.1±3.5	124.1±3.5	147.8±8.3	136.5±10.1	130.9±8.6	130.9±8.6
	Xmax	150	135	130	130	155	150	145	145
	Xmin	130	120	120	120	130	120	120	120
10 min		139.1±6.5	125±4.6	124.1±3.5	124.1±3.5	147.1±8.3	135.9±10.6	130.3±9.2	130.3±9.2
	Xmax	150	135	130	130	155	150	145	145
	Xmin	130	120	120	120	130	120	120	120

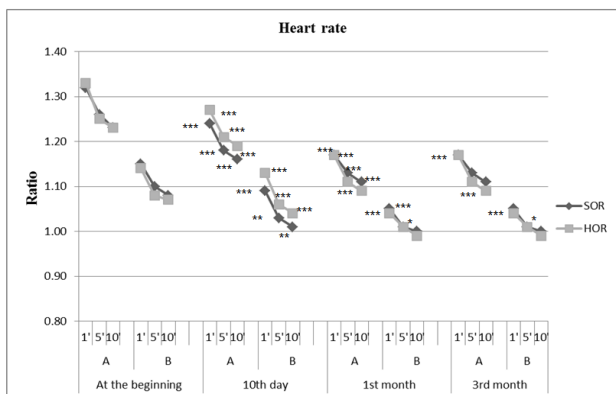


Figure 1: Changes in average heart rate during the active orthostatic test given as the ratio of the obtained results and baseline values; A = active state; B = lying position. * $P < 0.01$, ** $P < 0.005$, *** $P < 0.0001$ = significant difference compared with baseline values

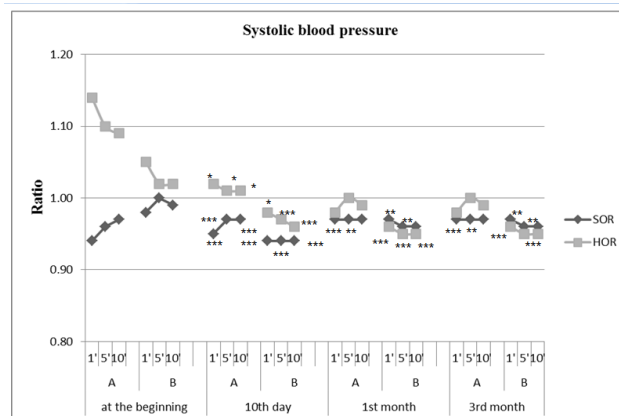


Figure 2: Changes in mean SBP during active orthostatic test given as the ratio of the obtained results and baseline values; A = active state; B = lying position. * $P < 0.01$, ** $P < 0.005$, *** $P < 0.0001$ = significant difference compared with baseline values