

# Genetic Polymorphism of CYP2A6 and Its Relationship with Nicotine Metabolism in Male Batakese Smokers Suffered from Lung Cancer in Indonesia

Noni Novisari Soeroso<sup>1\*</sup>, Rozaimah Zain-Hamid<sup>2</sup>, Bintang Y. M. Sinaga<sup>1</sup>, Ahmad Hamim Sadewa<sup>3</sup>, Tamsil Syafiuddin<sup>1</sup>, Elisna Syahrudin<sup>4</sup>, Gino Tann<sup>5</sup>, Erna Mutiara<sup>6</sup>

<sup>1</sup>Department of Pulmonology and Respiratory Medicine, Faculty of Medicine, University of Sumatera Utara, Jl. Dr Mansyur No.5 Medan 20155, Indonesia; <sup>2</sup>Department of Pharmacology and Therapeutics, Faculty of Medicine, University of Sumatera Utara, Jl. Dr Mansyur No.5 Medan 20155, Indonesia; <sup>3</sup>Department of Biochemistry, Faculty of Medicine, Gadjah Mada University, Jl. Farmako Sekip Utara, Yogyakarta 55281, Indonesia; <sup>4</sup>Department of Pulmonology and Respiratory Medicine, Faculty of Medicine, University of Indonesia, Jl. Persahabatan Raya No. 1, Jakarta 13230, Indonesia; <sup>5</sup>Department of Clinical Pathology, Faculty of Medicine, University of Sumatera Utara, Jl. Dr Mansyur No.5 Medan 20155, Indonesia; <sup>6</sup>Department of Biostatistics, Faculty of Public Health, University of Sumatera Utara, Jl. Dr Mansyur No.5 Medan 20155, Indonesia

## Abstract

**Citation:** Soeroso NN, Zain-Hamid R, Sinaga BYM, Sadewa AH, Syafiuddin T, Syahrudin E, Tann G, Mutiara E. Genetic Polymorphism of CYP2A6 and Its Relationship with Nicotine Metabolism in Male Batakese Smokers Suffered from Lung Cancer in Indonesia. Open Access Maced J Med Sci. <https://doi.org/10.3889/oamjms.2018.259>

**Keywords:** Polymorphism of CYP2A6 gene; Batakese; Lung Cancer; Nicotine metabolism; Smokers

**\*Correspondence:** Noni Novisari Soeroso, Department of Pulmonology and Respiratory Medicine, Faculty of Medicine, University of Sumatera Utara, Jl. Dr Mansyur No.5 Medan 20155, Indonesia. E-mail: noni@usu.ac.id

**Received:** 12-Mar-2018; **Revised:** 22-May-2018; **Accepted:** 25-May-2018; **Online first:** 15-Jul-2018

**Copyright:** © 2018 Noni Novisari Soeroso, Rozaimah Zain-Hamid, Bintang Y. M. Sinaga, Ahmad Hamim Sadewa, Tamsil Syafiuddin, Elisna Syahrudin, Gino Tann, Erna Mutiara. This is an open-access article distributed under the terms of the Creative Commons Attribution-NonCommercial 4.0 International License (CC BY-NC 4.0)

**Funding:** This research did not receive any financial support

**Competing Interests:** The authors have declared that no competing interests exist

**BACKGROUND:** Cytochrome P450 2A6 (CYP2A6) is known as an enzyme which is responsible for the metabolism of chemical compounds.

**AIM:** This study aimed to analyse the relationship between CYP2A6 gene polymorphism with nicotine metabolism rates and lung cancer incidence among smokers of Batak ethnic group in Indonesia.

**METHODS:** This study was a case-control study involving 140 research subjects through a purposive sampling technique from three hospitals in Medan, Indonesia. An examination of nicotine metabolism rates was conducted for all subjects using the 3HC/cotinine ratio parameter with LC-MS/MS technique. The examination of the CYP2A6 gene was performed with PCR-RFLP. Data were analysed with Conditional Logistic Regression test using Epi Info 7.0 software.

**RESULTS:** The allele frequencies of CYP2A6\*1A, CYP2A6\*1B, and CYP2A6\*4A found were 44.3%, 48.9%, and 6.8%, respectively. The \*1B allele showed the highest metabolism rate. It is found that slow metabolizer individuals were 5.49 times more likely to develop lung cancer (P = 0.01, 95%CI 1.2-24.8).

**CONCLUSION:** Among the Batakese smokers studied, the CYP2A6\*1B allele was found to be the most common allele and showed the highest rate of nicotine metabolism. However, the results show the insignificant relationship among CYP2A6 genetic polymorphism, nicotine metabolism, and lung cancer incidence.

## Introduction

Lung cancer is the largest case of cancer in the world with an increased number of patient at approximately 1.2 million people/year [1], and it also shows an increase in mortality [2]. One cause of lung cancer is from tobacco smoke because of smoking activity with nicotine and nitrosamine as carcinogenic substances contained in it [3]. Carcinogenic

substances in cigarettes require metabolic activation which is carried by enzymes in a human body.

Cytochrome P450 (CYP) is a superfamily of heme-containing monooxygenases involved in the metabolism of drugs, environmental pollutants, and food materials which contain chemical compounds and endogenous compounds [4]. Among the family genes of CYP2A, only the CYP2A6 gene encodes active proteins while the other genes are catalytically defective enzymes [5]. CYP2A6 gene is also

responsible for the metabolism of carcinogenic substances of tobacco [6] [7].

One way to detect the enzyme capacity of CYP2A6 in metabolising tobacco substances, especially nicotine, is by investigating the nicotine metabolite ratio (NMR) between cotinine (COT) and trans-3'-hydroxycotinine (3HC). As known, nicotine in tobacco is metabolized into cotinine (COT) and then into trans-3'-hydroxycotinin (3HC) by CYP2A6 enzymes [8] [9]. The capacity of CYP2A6 enzyme based on NMR can be used to show the levels of body needs in maintaining the nicotine levels. In this case, there are two types of metabolism which occur, namely fast metabolizer and slow metabolizer. The fast metabolizer signifies a high level of need in maintaining the nicotine levels in the body, so it leads to increased consumption of cigarette and a higher risk of lung cancer whereas the slow metabolizer signifies the opposite [10].

Related to the above explanation, several studies found that the genetic polymorphisms of CYP2A6 have a relationship with nicotine metabolism. Su *et al.*, [11] found that enzyme activity was detected higher in CYP2A6\*1 which indicated a high rate of nicotine metabolism. Nakajima *et al.*, [12] revealed a large difference in the cotinine ratio of nicotine in each. In their follow-up studies, they concluded that the difference between individuals in the formation of cotinine from nicotine has a strong association with the genetic polymorphism of the CYP2A6 gene, and this result was found in 92 healthy Japanese. Also, another study also detected that there was a difference in the nicotine metabolism rate between Korean population and the Japanese population [13]. Similarly, Caraballo *et al.* [14] and Peàrez-Stable *et al.*, [15] found a difference in nicotine metabolism between smokers from the Black race and Caucasian race.

Besides the relationship between the genetic polymorphism of CYP2A6 and nicotine metabolism, Fujieda *et al.*, [16] found that there was a clear relationship between the genetic polymorphism of CYP2A6 and cancer risk in the Japanese population. Tanner *et al.*, [17] also reported the same findings in which they examined the relationship between the genetic polymorphism of CYP2A6 with nicotine metabolism and the risk of lung cancer in the American Indian population.

However, several other studies found that there was no apparent relationship between the genetic polymorphism of CYP2A6 with nicotine metabolism and the risk of developing lung cancer [16] [18] [19] [20] [21]. Based on this, further research on the relationship between the genetic polymorphisms of CYP2A6 with nicotine metabolism and the risk of lung cancer in only one ethnic group needs to be conducted to obtain more significant results.

Based on the above explanations, this research was aimed to investigate the relationship between genetic polymorphisms of CYP2A6 in the population of Batak ethnic group with nicotine metabolism and the risk of developing lung cancer. The three allele investigated were CYP2A6\*1A, CYP2A6\*1B, and CYP2A6\*4A. This based on the study from Oscarson *et al.*, [22] that found those three alleles as the most frequent allele in the Asian population. Also, the Batak ethnic group was chosen due to their tradition to smoke in several traditional ceremonies and their pure genetic inheritance. Thus, this study would give a more significant model of CYP2A6 genetic polymorphisms associated with nicotine metabolism and the risk of lung cancer.

## Methods

This study involved 140 male Batakese smokers which were recruited from Haji Adam Malik Hospital, USU Hospital, and Elizabeth Hospital in Medan, North Sumatra, Indonesia. The recruited subjects were pure descendants of the Batak ethnicity whose father, mother, and both grandparents were pure Batakese. All subjects represented 6 sub-ethnics of Batak (i.e. Karo, Pakpak, Toba, Simalungun, Mandailing, and Angkola) [23]. Out of the 140 subjects, 70 smokers who suffered from lung cancer were specified as case samples, and 70 healthy smokers were specified as control samples. All subjects were asked to answer a questionnaire which consisted of structured information about residence, pedigree chart (three breeds of pure Batak ethnicity), occupational history, smoking status, and history of cancer in the family (parents and siblings). Before research, all subjects signed informed consent.

The inclusion criteria for the case sample were lung cancer patients from the Batak ethnic group who have been diagnosed based on cytology or histopathology examination, male lung cancer patients, and smokers. On the other hand, the inclusion criteria for the control sample were individuals who did not have lung cancer matched with the case group according to age, sex, and Batak people who had a smoking history.

The exclusion criteria for the case sample were lung cancer patients who consumed rifampicin, dexamethasone, phenobarbital, methoxsalen (8-methoxypsoralen), tranlycypromine, tryptamine, coumarin, and neonatal thiol, abnormal function of liver and kidney, and were not undergoing chemotherapy while the exclusion criteria for the control sample were healthy individuals who did not consume drugs.

The methods used in this research were purposive sampling and case-control study. The

research was conducted within a period of one year (November 2016 to April 2017), and it has been accepted by the Ethics Committee of the Faculty of Medicine, University of Sumatera Utara.

Nicotine II chewing gum was obtained from Guardian Pharmacia (Singapore). Nicotine, cotinine and 3-hydroxycotinine were purchased from Sigma (St. Louis, Mo). Pure gene deoxyribonucleic acid (DNA) isolation kit was obtained from Promega (Madison, USA). Restriction enzymes were purchased from New England Biolabs (Beverly, Mass). All other chemicals and solvents which had the highest levels were available commercially.

Blood samples from all subjects were collected as much as 2ml, and then stored at  $-80^{\circ}\text{C}$ . Genomic DNA was extracted from peripheral lymphocytes using Puregene DNA Isolation Kit (Promega). The *CYP2A6\*1A*, *CYP2A6\*1B*, and *CYP2A6\*4A* genotypes used the following primer: 2Aex7F (5'-GRCCAAGATGCCCTACATG-3') and 2A6R2 (5'-AAAATGGGCATGAACGCC-3') [24].

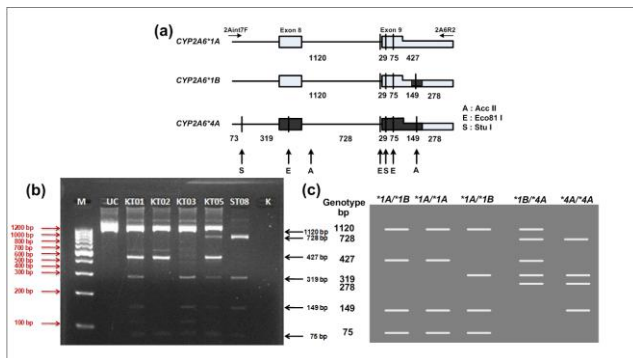


Figure 1: (a) The *CYP2A6\*1A*, *CYP2A6\*1B*, and *CYP2A6\*4A* allele genotypes by PCR-RFLP. The structure scheme of *CYP2A7* and *CYP2A6* gene. Dotted boxes and open boxes represented the *CYP2A7* and *CYP2A6* exon. Lines represented the introns of each gene. The PCR amplification was conducted with a primer pair, shown in horizontal arrows. The amplified DNA was triple-digested by *Eco811*, *AccII*, and *StuI*. Restriction sites were marked with vertical arrows E, A, and S [33]; (b) Schematic polymerase PCR-RFLP patterns for different of *CYP2A6* alleles in the case group 1-5, M = marker, K = control, UC = uncut. The \*1A/\*1B, 1120, 427, 319, 149, and 75 bp fragments (KT 01). The \*1A/\*1A, 1120, 427, 149, and 79 bp fragments (KT 02). The \*1B/\*1B, 1120, 319, 149, and 75 bp fragments (KT 03). The \*1A/\*4A, 1120, 728, 427, 319, and 278 bp fragments (KT 05). The \*4A/\*4A, 728, 319, 278, and 129 bp fragments (ST 08). The marker was a 1200 bp ladder marker; (c). Representative photograph of polymerase chain reaction-restriction fragment length polymorphism patterns for different *CYP2A6* alleles of *CYP2A6\*1A*, *CYP2A6\*1B*, and *CYP2A6\*4*

The genomic DNA samples (0.5  $\mu\text{g}$ ) was added with PCR mixtures (25  $\mu\text{l}$ ) which contained 1 PCR buffer, 1.5 mM  $\text{MgCl}_2$ , 0.4  $\mu\text{M}$  of each primer, 250  $\mu\text{M}$  dNTPs, and 1 U of Taq DNA polymerase. After initial denaturation at a temperature of  $95^{\circ}\text{C}$  for 1 minute, the application was carried out with denaturation at  $95^{\circ}\text{C}$  for 15 seconds, annealing at  $60^{\circ}\text{C}$  for 20 seconds, and extension at  $72^{\circ}\text{C}$  for 3 minutes for 35 cycles, followed by a final extension at  $72^{\circ}\text{C}$  for 7 minutes. The PCR product was triple-

digested with restriction enzymes, such as *Eco811*, *AccII*, and *StuI*. The product was analysed by electrophoresis at 2% of agarose gel [25]. The *CYP2A6\*1A*, *CYP2A6\*1B*, and *CYP2A6\*4A* allele genotypes obtained from PCR-RFLP, the schematic polymerase PCR-RFLP patterns for different of *CYP2A6* alleles, and the representative photograph of PCR-RFLP patterns for different *CYP2A6* alleles are shown in Figure 1.

The research subjects should not smoke within 2 weeks to eliminate nicotine and metabolite from cigarettes. On the next day, after a night of fasting, all subjects were asked to chew nicotine gum (Nicotinell gum which contained 4 mg of nicotine) for 30 minutes, and they should chew for 10 per 30 seconds.

Blood samples were collected from the cubital vein just before and two hours after started to chew, and these samples were stored at  $-20^{\circ}\text{C}$  before the analysis. Measurement of cotinine and 3'-hydroxycotinine (3HC) was conducted with *Liquid Chromatography Tandem-Mass Spectrometry* (LC-MS/MS). The ratio of 3HC/cotinine was calculated as the nicotine metabolism index. Rubinstein et al., [26] state that the ratio of 3HC/cotinine for slow metabolizers is  $< 0.5$  while the ratio for fast metabolizers is  $\geq 0.5$ . Intraassay and interassay precision tests had been conducted in the LC-MS/MS equipment used.

Data analysis was performed by using Epi Info-7 software. Conditional Logistic Regression test was run to assess the differences between the two groups on demographic factors. Also, conditional logistic regression test and logistic regression test were also run to investigate the relationship between *CYP2A6* genotype and allele with lung cancer incidence and nicotine metabolism rate. The difference between nicotine metabolism rates and *CYP2A6* allele types was tested with the Kruskal Wallis test and Mann Whitney test. Logistic regression test was conducted to assess the effect of the *CYP2A6* allele on nicotine metabolism rate while conditional logistic regression test was conducted to assess the relationship between nicotine metabolism rate with lung cancer incidence. The ratio of nicotine metabolism rate (3HC/cotinine ratio) between the case group and the control group and its relation to *CYP2A6* allele were analysed with the Mann Whitney test. P value  $< 0.05$  was considered significant.

## Results

This study involved 70 lung cancer patients in the case group and 70 healthy people in the control group. The demographic characteristics of all subjects, such as 5 sub-ethnics of Batak (i.e. Toba,

Karo, Simalungun, Mandailing, and Pak Pak), types of cigarette, Brinkman Index (multiplication of smoking duration with number of cigarette per day), types of cancer, and Body Mass Index (BMI) can be seen in Table 1.

Table 1 shows that there was no significant difference in age, sub-ethnics of Batak, and the amount of cigarette consumption expressed in the Brinkman Index between the case group and the control group which means that these factors were not potentially biased in this study. The demographic factors which showed significant differences between the two groups were BMI and the types of cigarette.

**Table 1: Demographic characteristics of subjects**

		Total	Cases	Control	P-value
		N (%)	(n = 70) n (%)	(n = 70) n (%)	
Age	<65	106 (75.7)	52 (74.3)	54 (77.1)	0.69
	≥ 65	34 (24.3)	18 (25.7)	16 (22.9)	
	Toba	94 (67.1)	49 (70)	45 (64.3)	
Bataknese Sub ethnic	Karo	34 (24.3)	13 (18.6)	21 (30)	0.09
	Simalungun	4 (2.9)	1 (1.4)	3 (4.3)	
	Mandailing	7 (5)	6 (8.6)	1 (1.4)	
	Pakpak	1 (0.7)	1 (1.4)	0 (0.0)	
BMI	Underweight	16 (11.4)	6 (8.6)	10 (14.3)	0.01 <sup>a</sup>
	Normoweight	59 (42.2)	44 (62.9)	15 (21.4)	
	Overweight	29 (20.7)	10 (14.2)	19 (27.1)	
	Obesity	26 (18.6)	10 (14.2)	26 (37.2)	
	Mild	29 (20.7)	10 (14.3)	19 (27.2)	
Type of cigarette	Kretek	66 (47.1)	26 (37.1)	40 (57.1)	< 0.001 <sup>a</sup>
	Mix	45 (32.2)	34 (48.6)	11 (15.7)	
	Mild	13 (9.3)	6 (8.6)	7 (10)	
Brinkman Index	Moderate	53 (37.8)	24 (34.3)	29 (41.4)	0.63
	Severe	74 (52.9)	40 (57.1)	34 (48.6)	
Cytology/histopathology subtype	Squamous cell ca	5 (7.1)	5 (7.1)	0	NA
	Adenocarcinoma	65 (92.9)	65 (92.9)	0	

<sup>a</sup> significant with Conditional Logistic Regression test (matched based on gender and Batak ethnic group); BMI (body mass index), NA (not available).

After the PCR-RFLP was performed on all research subjects, data of *CYP2A6* genotypes and alleles were obtained as shown in Table 2. The frequency of *CYP2A6* genotypes in both groups did not show significant deviations from Hardy-Weinberg Equilibrium ( $p > 0.05$  for the case group and the control group). Among 140 male Batak smokers, the frequencies of *CYP2A6\*1A*, *CYP2A6\*1B*, and *CYP2A6\*4A* alleles were 44.3%, 48.9%, and 6.8%, respectively.

This is quite surprising because *\*1A* allele is assumed as the wildtype in most populations and other ethnic groups. In contrast, this study found that the highest number of allele found was *\*1B*. The highest number of genotypes found was *CYP2A6\*1A\*1B* with 37.1%, and it was followed by *CYP2A6\*1A\*1A* with 24.3%.

There was a significant difference in nicotine metabolism rates among the types of the *CYP2A6* allele. Although the average metabolic rate of all allele groups was classified into the slow metabolizer (ratio of 3HC/cotinine  $\leq 0.5$ ), the *\*1B* allele showed the highest metabolic rate compared to other alleles, which was 3 times higher than the *\*4A* allele and 1.5 times higher than the *\*1A* allele.

**Table 2: Frequency of *CYP2A6* genotype and allele and its relation to nicotine metabolism rate**

Genotype	Subjects*		3HC/cotinine Ratio <sup>d</sup>
	n	%	
<i>CYP2A6*1A*1A</i>	34	24.3	0.14 ± 0.31 0.21 ± 0.37 0.07 ± 0.21
<i>CYP2A6*1A*1B</i>	52	37.1	
<i>CYP2A6*1B*1B</i>	42	30	
<i>CYP2A6*1A*4A</i>	4	2.9	
<i>CYP2A6*4A*4A</i>	8	5.7	

Allele	Subjects*		3HC/cotinine Ratio <sup>d</sup>
	n	%	
<i>CYP2A6*1A</i>	124	44.3	0.14 ± 0.31 0.21 ± 0.37 0.07 ± 0.21
<i>CYP2A6*1B</i>	137	48.9	
<i>CYP2A6*4A</i>	19	6.8	

All frequencies of *CYP2A6* genotypes were in Hardy-Weinberg equilibrium; <sup>a</sup>  $p < 0.001$  with Kruskal Wallis test; <sup>b</sup>  $p = 0.02$  with Mann Whitney U test; <sup>c</sup>  $p < 0.001$  with Mann Whitney U test; <sup>d</sup> data are expressed in mean ± standard deviation.

To investigate the association between *CYP2A6* genotype and allele with lung cancer incidence and nicotine metabolism rate, a cross-tabulation was conducted as shown in Table 3. Nicotine metabolism rate was measured using a 3HC/cotinine ratio parameter in serum, and it was measured 2 hours after the administration of nicotine gum. A ratio value of 3HC/COT  $< 0.5$  was classified as slow metabolizer while a value  $\geq 0.5$  was classified as fast metabolizer.

Table 3 shows that there was no significant relationship between *CYP2A6* genotype and an allele with lung cancer incidence and nicotine metabolism rate ( $P > 0.05$ ). One interesting point was that almost all subjects were classified as slow metabolizers, and only 13 people (18.6%) were classified as fast metabolizers. Based on Table 3, individuals with *CYP2A6\*1B* allele were 2.07 times more likely to be fast metabolizer if compared with the *\*1A* allele (wildtype). In contrast, individuals with *\*4A* allele were more likely to be slow metabolizer although this relationship was not statistically significant. These findings are in line with the data shown in Table 4 which states that the *\*1B* allele has the highest 3HC/cotinine ratio compared to the other alleles.

**Table 3: Association of *CYP2A6* genotype and allele with lung cancer incidence and nicotine metabolism rate**

	Genotype	Lung Cancer		P-value	Nicotine Metabolism		P-value	OR	95% CI	
		Case	Control		Fast	Slow				
<i>CYP2A6</i>	<i>*1A*1A</i>	15 (21.4)	19 (27.1)	0.374 <sup>a</sup>	0(0)	34 (26.5)	0.142 <sup>b</sup>	NA <sup>c</sup>	NA	
	<i>*1A*1B</i>	30 (42.8)	22 (31.4)		7(53.8)	45 (35.1)				
	<i>*1B*1B</i>	21 (30)	21 (30)		5(38.5)	37 (28.9)				
	<i>*1A*4A</i>	2 (2.9)	2 (2.9)		1(7.7)	3(2.3)				
	<i>*4A*4A</i>	2 (2.9)	6 (8.6)		0 (0)	8 (6.2)				
<i>CYP2A6</i>	Total	70 (100)	70 (100)		13	127 (100)				
	<i>*1A</i>	62 (44.3)	62 (44.3)		8(30.8)	116(45.7)		1 <sup>d</sup>	1	
	<i>*1B</i>	72 (51.4)	65 (46.4)	0.187 <sup>a</sup>	17(65.4)	120(47.2)	0.19 <sup>b</sup>	2.07	0.8-4.9	
<i>CYP2A6</i>	Allele	<i>*4A</i>	6 (4.3)	13 (9.3)		1 (3.8)	18 (7.1)		0.76	0.09-6.45
	Total	140 (100)	140 (100)		26	254 (100)				

<sup>a</sup> Conditional Logistic Regression test with matched gender and Batak ethnic group; <sup>b</sup> Logistic Regression test; <sup>c</sup> OR not available; <sup>d</sup> Reference value.

Theoretically, individuals who are fast metabolizers will inhale more nicotine in cigarettes, and thereby increase the risk of lung cancer incidence. Surprisingly, this study found the opposite. Individuals who were slow metabolizers were 5.49 times more likely to develop lung cancer than fast metabolizers (95% CI 1.2 – 24.8;  $P = 0.01$ ), as shown in Table 4. The difference in nicotine metabolism rate between the case group and the control group and its

relationship with *CYP2A6* allele can be seen in Figure 2.

**Table 4: Association of nicotine metabolism rate with lung cancer incidence**

Nicotine Metabolism	Cancer n (%)	Control n (%)	P - value	OR
Fast metabolizer	2 (2.9)	11 (15.7)	0.01 <sup>a</sup>	1 <sup>b</sup> 5.49 (1.2-24.8)
Slow Metabolizer	68 (97.1)	59 (84.3)		
Total	70 (100)	70 (100)		

<sup>a</sup> Significant with Conditional Logistic Regression test; <sup>b</sup> Reference value.

Figure 2 showed that there was no significant difference in the level of nicotine, cotinine, and 3HC (OH-cotinine) in plasma based on *CYP2A6* allele types in both groups (the cancer group and the control group). It indicates that the influence of *CYP2A6* allele lies in the nicotine metabolism rate of the subjects (3HC/cotinine ratio), but it does not affect the rate of nicotine absorption in the body.

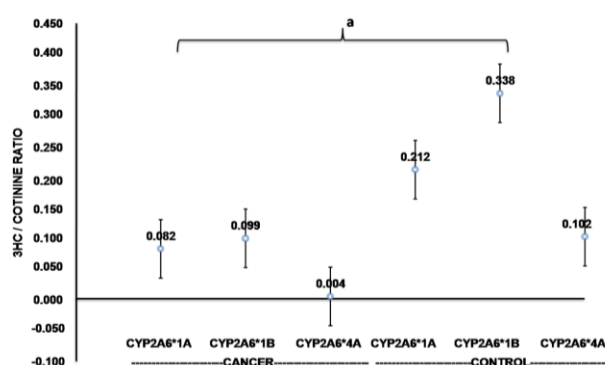


Figure 2: Comparison of nicotine metabolism rate (3HC/cotinine ratio) between the case group and the control group and its relationship with *CYP2A6* allele. There was a significant difference in the level of 3HC/cotinine ratio between the case group and the control group ( $P < 0.001$  with Mann Whitney test)

## Discussion

In this study, the age range of lung cancer patients as the research subjects was 40-64 years. This based on the research conducted by Mong *et al.*, [27] that found that the age of most lung cancer patients was over 60 years ( $\pm 51.4\%$ ) because exposure to carcinogenic substances took a long time to cause an imbalance between oncogene function and tumor suppressor gene in the growth process of cancer cells, whereas lung cancer found at a young age or below the age of 50 years was associated with genetic factor or started smoking at a young age [28].

The ethnic group studied was Batak as the population of research subjects. In addition to the pure genetic inheritance in Batak, Batak society in North Sumatra has been accustomed to cigarettes, including mild cigarettes, *kretek*, and white cigarettes. Therefore, social environment is highly influential on the smoking behaviour of Batak ethnicity because

smoking has an important element in various processes of customary activities. Furthermore, cigarettes must be provided along with food and beverages in every series of traditional event. After the traditional event finishes, cigarettes which are not consumed will be taken back by the event owner. Teenagers and children will usually hide 1-2 cigarettes, and then the cigarettes will be consumed alone furtively or together with their friends. This causes Batak children to have been accustomed to consuming cigarettes since young age [29].

Regarding smoking and different types of cigarette, this study also found that the most common lung cancer found, adenocarcinoma is considered to have a relation to the type of cigarette consumed. This based on the study that mentions that previously the most common type of cytology/histopathology of lung cancer was the squamous cell carcinoma; however, in recent decades, adenocarcinoma has been the most prevalent type of lung cancer. This might occur because of the interest change in the type of cigarette consumed [30]. Thus, in the case of Batak population, *kretek*, which was discovered to be more popular than mild cigarettes contains cloves which make smokers inhale more deeply, so the cigarette smoke will pass through small respiratory tracts which will make them exposed to more carcinogens [31]. Besides, Thun *et al.* [32] state that higher levels of nitrate contained in the tobacco mixture are also associated with the development of adenocarcinoma type of cancer cells. Stellmann *et al.*, [33] also state that extremely high levels of nitrosamines in the peripheral respiratory tract would trigger the occurrence of cell changes into adenocarcinoma. Thus, those results are also by the fact that tobacco-specific N-nitrosamines (TSNAs) induce adenocarcinoma type of lung cancer [34].

Interindividual variation associated with lung cancer risk is determined by uptake variation and metabolism of carcinogenic tobacco substances. The uptake of carcinogenic substances is related to the uptake of nicotine (the addictive component of tobacco). Previous research has found that pulmonary tumorigenesis can be triggered by the anti-apoptotic effect of cotinine through the activation of PI3K/Akt pathway mediated by *CYP2A6* [35]. *CYP2A6* in smokers is the main enzyme in nicotine metabolism. Nicotine will be metabolized into cotinine (COT), and COT will be metabolized into trans-3-hydroxycotinine (3HC) with the help of *CYP2A6* enzymes. If the smoker is a slow metabolizer of nicotine, he only smokes a few cigarettes; thus, the level of exposure to carcinogenic materials will be low. Also, it is also reported that plasma cotinine concentrations, which are the main metabolite of nicotine, play an important role in the development of lung cancer incidence [36]. In the wildtype of *CYP2A6*, the risk of lung cancer incidence will increase. However, if gene deletion *CYP2A6\*4* allele is found, it can reduce lung cancer incidence.

The most common *CYP2A6* allele in both groups in this study was \*1B. *CYP2A6*\*1B gene allele gives a high metabolic index, faster than the effect of \*1A allele. Oscarson *et al.*, [22] which discovered the frequency of *CYP2A6*\*1B allele was 30.0% in Caucasians (Spaniards) and 40.6% in Asian (Chinese) populations, found that the *CYP2A6* genetic polymorphism might be associated with lung cancer in the American and Asian populations, but it is not the same for the Caucasian population. This suggests that different ethnic will result in a different relationship between the two. In Batak ethnic population, the \*1B allele was found about 48.9% higher than some other research population, but no significant relationship was found between *CYP2A6* genotype and allele with lung cancer incidence ( $P > 0.05$ ). A different result was found by Fujieda *et al.*, [16] which stated that *CYP2A6* is not only one of the major determinants which do affect not only smoking behaviour, but also individual's susceptibility to lung cancer for Japanese Men population.

Several studies have also investigated the relationship between deleted polymorphisms, *CYP2A6*\*4, and the risk of lung cancer in different populations. However, the results are inconsistent. One study in Japan reported a 50% reduction in cancer risk related to *CYP2A6*\*4 statistically while a similar study in China found a twofold increase in lung cancer risk in individuals with *CYP2A6*\*4. Several meta-analyses reported a statistically significant 50% lower crude odds ratio in lung cancer with slow metabolizer smokers in the Asian populations. By our results, *CYP2A6*\*4 was associated with an approximately 30% decreased the risk of lung cancer [18].

The results of this study showed that there was no significant relationship between *CYP2A6* genotype and allele with nicotine metabolism rate ( $P > 0.05$ ). One interesting thing found in this study was that almost all subjects were classified as slow metabolizers, and only 13 people (18.6%) were classified as fast metabolizers. However, there was a significant difference in nicotine metabolism rates among the types of the *CYP2A6* allele. The average metabolic rate of all allele groups was classified as the slow metabolizer (3HC/cotinine ratio  $\leq 0.5$ ), but the \*1B allele showed the highest metabolic rate compared to other alleles, which was 3 times higher than the \*4A allele and 1.5 times higher than the \*1A allele. The \*1B allele tends to be a fast metabolizer than the \*4A allele. Over 20 years ago, individuals who metabolised nicotine poorly would smoke fewer cigarettes a day or less intense per cigarette than smokers who metabolised nicotine more efficiently [18]. This poor metabolism will tend to develop lung cancer because of its lower exposure to carcinogens in nicotine through the smoke. Several studies have reported that smokers who carry a lack of activity or less *CYP2A6* allele would smoke less. However, only in the Asian populations, both Japanese and Chinese,

which have a high genetic variant prevalence, have an association between *CYP2A6*, smoking dose, and lung cancer. Theoretically, individuals who are fast metabolizers will inhale more nicotine in cigarettes, and thereby increase the risk of developing lung cancer. Surprisingly, this study found the opposite. Individuals who were slow metabolizers were 5.49 times more likely to develop lung cancer than the fast metabolizers (95% CI 1.2 – 24.8;  $P = 0.01$ ). Based on the above explanation, the relationship between genetic polymorphisms of *CYP2A6* with nicotine metabolism and the risk of developing lung cancer in Batak population was found to have different results from different populations and races. Therefore, further research is important to investigate the differences in other populations and races.

In conclusion, *CYP2A6* activities signified the need for more cigarettes to maintain the levels and the metabolism of nicotine. The most common *CYP2A6* allele in the two groups was \*1B. The results showed that no significant relationship was found between *CYP2A6* and nicotine metabolism in lung cancer patients. It was also found that the \*1B allele was more likely to be a slow metabolizer than the \*1A allele.

## Acknowledgement

The authors would like to thank Haji Adam Malik Hospital, Elizabeth Hospital, and USU Hospital in North Sumatra, Indonesia for the opportunity and place provided for conducting this research.

## References

1. Parkin DM, Bray F, Ferlay J & Pisani P. Estimating the world cancer burden: Globocan 2000. *Int J Cancer*. 2000; 94(2):153-156. <https://doi.org/10.1002/ijc.1440> PMID:11668491
2. GLOBOCAN 2012: estimated cancer incidence, mortality and prevalence worldwide in 2012. International Agency for Research on Cancer, 2012.
3. Medical Research Council. Tobacco smoking and cancer of the lung. *Br Med J*. 1957; 1(5034):1523-1524. <https://doi.org/10.1136/bmj.1.5034.1523>
4. Nelson DR, Koymans L, Kamataki T, Stegeman JJ, Feyereisen R, Waxman DJ, et al. P450 superfamily: update on new sequences, gene mapping, accession numbers and nomenclature. *Pharmacogenetics*. 1996; 6:1-42. <https://doi.org/10.1097/00008571-199602000-00002> PMID:8845856
5. Ding S, Lake BG, Friedberg T, Wolf CR. Expression and alternative splicing of the cytochrome P450 *CYP2A7*. *Biochem J*. 1995; 306:161-166. <https://doi.org/10.1042/bj3060161> PMID:7864805 PMCID:PMC1136496
6. Nakajima M, Yamamoto T, Nunoya K, Yokoi T, Nagashima K,

- Inoue, K, et al. 'Role of human cytochrome P4502A6 in C-oxidation of nicotine'. *Drug Metab Dispos.* 1996; 24(1):1212-1217. PMID:8937855
7. Yamazaki H, Inoue K, Hashimoto M, Shimada T. Roles of CYP2A6 and CYP2B6 in nicotine C-oxidation by human liver microsomes. *Archtoxicol.* 1999; 73:65–70. <https://doi.org/10.1007/s002040050588>
8. Zhang XL, Su T, Zhang QY, Gu J, Caggana M, Li HM, et al. Genetic polymorphism of the human CYP2A13 gene: identification of single-nucleotide polymorphisms and functional characterization of an Arg257Cys variant. *J Pharmacol Exp Ther.* 2002; 302:416–423. <https://doi.org/10.1124/jpet.302.2.416> PMID:12130698
9. Cheng XY, Chen GL, Zhang WX, Zhou G, Wang D & Zhou HH. Arg257Cys polymorphism of CYP2A13 in a Chinese population. *Clin Chim Acta.* 2004; 343:213–216. <https://doi.org/10.1016/j.cccn.2004.01.017> PMID:15115698
10. Yoshida R, Nakajima M, Watanabe Y, Kwon JT & Yokoi T. Genetic polymorphisms in human CYP2A6 gene causing impaired nicotine metabolism. *Br J Clin Pharmacol.* 2002; 54(5):511-517. <https://doi.org/10.1046/j.1365-2125.2002.01667.x> PMID:12445030 PMID:PMC1874463
11. Su T, Bao Z, Zhang QT, Smith TJ, Hong JY & Ding X. Human cytochrome p450 CYP2A13 : predominant expression in the respiratory tracts and its high efficiency metabolic activation of a tobacco specific carcinogen, 4-(Methylnitrosamino)-1-(3-Pyridyl)-1-butanone. *Cancer Res.* 2000; 60(18):5074-5079. PMID:11016631
12. Nakajima M, Yamamoto T, Kuroiwa Y & Yokoi T. Improved highly sensitive method for determination of nicotine and cotinine in human plasma by high-performance liquid chromatography. *J Chromatogr Biomed Sci Appl.* 2000; 742(1):211-215. [https://doi.org/10.1016/S0378-4347\(00\)00149-3](https://doi.org/10.1016/S0378-4347(00)00149-3)
13. Nakajima M, Kwon J-T, Tanaka N, Zenta T, Yamamoto Y, Yamamoto H, et al. Relationship between interindividual differences in nicotine metabolism and CYP2A6 genetic polymorphism in humans. *Clin Pharmacol Ther.* 2001; 69:72-78. <https://doi.org/10.1067/mcp.2001.112688> PMID:11180041
14. Caraballo RS, Giovino GA, Pechacek TF, Mowery MS, Richter PA, Strauss WJ, et al. Racial and ethnic differences in serum cotinine levels of cigarette smokers. *JAMA.* 1998; 280:135-139. <https://doi.org/10.1001/jama.280.2.135> PMID:9669785
15. Pe  rez-Stable EJ, Herrera B, Jacob P III, Benowitz NL. Nicotine metabolism and intake in black and white smokers. *JAMA.* 1998; 280:152-156. <https://doi.org/10.1001/jama.280.2.152>
16. Fujieda M, Yamazaki H, Saito T, Kiyotani K, Gyamfi MA, Sakurai M, et al. Evaluation of CYP2A6 genetic polymorphisms as determinants of smoking behaviour and tobacco related lung cancer risk in male Japanese smokers. *Carcinogenesis.* 2004; 25(12):2451-2458. <https://doi.org/10.1093/carcin/bqh258> PMID:15308589
17. Tanner J-A, Henderson JA, Buchwald D, Howard BV, Henderson PN and Tyndale RF. Variation in CYP2A6 and nicotine metabolism among two American Indian tribal groups differing in smoking patterns and risk for tobacco-related cancer. *Pharmacogenetics and Genomics.* 2017; 27(5):169-178. <https://doi.org/10.1097/FPC.0000000000000271> PMID:28181923 PMID:PMC5382092
18. Yuan JM, Nelson HH, Carmella SG, Wang R, et al. CYP2A6 genetic polymorphisms and biomarkers of tobacco smoke constituents in relation to risk of lung cancer in the Singapore Chinese Health Study. *Carcinogenesis.* 2017; 38(4):411-418. <https://doi.org/10.1093/carcin/bqx012> PMID:28182203
19. Swan GE, Benowitz NL, Lessov CN, Jacob P, Tyndale RF & Wilhelmsen K. Nicotine metabolism: the impact of CYP2A6 on estimates of additive genetic influence. *Pharmacogenetics and Genomics.* 2005; 15:115-125. <https://doi.org/10.1097/01213011-200502000-00007> PMID:15861035
20. Fagan P, Pokhrel P, Herzog TA, Pagano IS, Franke AA, et al. Nicotine metabolism in young adult daily menthol and nonmenthol smokers. *Nicotine & Tobacco Research.* 2016; 437-446. <https://doi.org/10.1093/ntr/ntv109> PMID:25995160 PMID:PMC4857147
21. McCracken NW, Cholerton S & Idle JR. Cotinine formation by cDNA-expressed human cytochromes P450. *Medical Science Research.* 1992; 20:877-878.
22. Oscarson M, McLellan RA, Gullst  n H, Ag  n  dez JAG, Ben  tez J, Rautio A, Raunio H, et al. Identification and characterisation of novel polymorphisms in the CYP2A locus: implications for nicotine metabolism. *FEBS Letters.* 1999; 460:321-327. [https://doi.org/10.1016/S0014-5793\(99\)01364-2](https://doi.org/10.1016/S0014-5793(99)01364-2)
23. Pribadi I. *Kebudayaan Batak, Mata Kuliah Budaya Nusantara, Sekolah Tinggi Akutansi Negara Spesialisasi Penilai/PBB Jakarta,* 2009.
24. Benowitz NL. Cotinine is a biomarker of environmental tobacco smoke exposure. *Epidemiol Rev.* 1996; 18(2):188-204. <https://doi.org/10.1093/oxfordjournals.epirev.a017925> PMID:9021312
25. Nakajima M, Yoshida R, Fukami T, McLeod HL & Yokoi T. Novel human CYP2A6 alleles confound gene deletion analysis. *FEBS Lett.* 2004; 569(1-3):75-81. <https://doi.org/10.1016/j.febslet.2004.05.053> PMID:15225612
26. Rubinstein ML, Benowitz NL, Auerback GM and Moscicki AB. Rate of nicotine metabolism and withdrawal symptoms in adolescent light smokers. *Pediatrics.* 2008; 122(3):e643-e647. <https://doi.org/10.1542/peds.2007-3679> PMID:18762498 PMID:PMC2722964
27. Mong C, Goron EB & Fuller C. High prevalence of lung cancer in surgical cohort of lung cancer patients a decade after smoking cessation. *J Cardiothorac Surg.* 2011; 6(19):1-7. <https://doi.org/10.1186/1749-8090-6-19>
28. Afrose R, Akram M, Masroor K, Siddiqui SA. Correlation of age and gender with different histological subtypes of primary lung cancer. *Med. J. Dr. D.Y. Patil University.* 2015; 8(4):447-451. <https://doi.org/10.4103/0975-2870.160783>
29. Siregar AP. *Determinan Perilaku Merokok Siswa Sekolah Dasar di Desa Simatahari Kecamatan Kota Pinang Kabupaten Labuhan Batu Selatan. Program Studi Magister Ilmu Kesehatan Masyarakat. Fakultas Kesehatan Masyarakat USU,* 2015.
30. Malik PS, Sharma MC, Mohanti BK, Shukla NK, Deo SVS, Mohan A, et al. Clinico-pathological Profile of Lung Cancer at AIIMS: A Changing Paradigm in India. *Asian Pacific J Cancer Prev.* 2013; 14(1):489-494. <https://doi.org/10.7314/APJCP.2013.14.1.489>
31. Brooks DR, Austin JH, Heelan RT, Ginsberg MS, Shin V, Olson SH, et al. Influence of type of cigarette on peripheral versus central lung cancer. *Cancer Epidemiol Biomarkers Prev.* 2005; 14:576-581. <https://doi.org/10.1158/1055-9965.EPI-04-0468> PMID:15767332
32. Thun ML, Lally CA, Flannery JL, Calle EE, Flanders WD, Heath CW. Cigarette smoking and changes in the histopathology of lung cancer. *J Natl Cancer Inst.* 1997; 89(1):1580–1586. <https://doi.org/10.1093/jnci/89.21.1580> PMID:9362155
33. Stellman SD, Muscat JE, Thompson S, Hoffmann D, Wynder EL. Risk of squamous cell carcinoma and adenocarcinoma of the lung in relation to lifetime alter cigarette smoking. *Cancer.* 1997; 80:382-388. [https://doi.org/10.1002/\(SICI\)1097-0142\(19970801\)80:3<382::AID-CNCR5>3.0.CO;2-U](https://doi.org/10.1002/(SICI)1097-0142(19970801)80:3<382::AID-CNCR5>3.0.CO;2-U)
34. Devesa SS, Bray F, Vizcaino AP, Parkin DM. International lung cancer trends by histologic type: male: female differences diminishing and adenocarcinoma rates rising. *Int J Cancer.* 2005; 117:294-299. <https://doi.org/10.1002/ijc.21183> PMID:15900604
35. Nakada T, Kiyotani K, Iwano S, Uno T, Yokohira M, et al. Lung tumorigenesis promoted by anti-apoptotic effects of cotinine, a nicotine metabolite through activation of PI3K/Akt pathway. *J Toxicol Sci.* 2012; 37:555–563. <https://doi.org/10.2131/jts.37.555> PMID:22687995
36. Tyndale RF, Sellers EM. Genetic variation in CYP2A6-mediated nicotine metabolism alters smoking behavior. *Therapeutic Drug Monitoring.* 2002; 24:163–171. <https://doi.org/10.1097/00007691-200202000-00026>