

Celiac Trunk and Hepatic Artery Variants in Pancreatic and Liver Resection Anatomy and Implications in Surgical Practice

Danilo Coco^{1*}, Silvana Leanza²

¹Augusto Murri Hospital, Fermo, Italy; ²Carlo Urbani Hospital, Jesi, Province of Ancona, Italy

Abstract

Citation: Coco D, Leanza S. Celiac Trunk and Hepatic Artery Variants in Pancreatic and Liver Resection Anatomy and Implications in Surgical Practice. Open Access Maced J Med Sci. <https://doi.org/10.3889/oamjms.2019.328>

Keywords: Cryolipolysis; Efficacy; Safety; Asian

***Correspondence:** Danilo Coco, Augusto Murri Hospital, Fermo, Italy. E-mail: webcostruction@msn.com

Received: 25-Nov-2018; **Revised:** 10-May-2019; **Accepted:** 12-May-2019; **Online first:** 23-Jun-2019

Copyright: © 2019 Danilo Coco, Silvana Leanza. This is an open-access article distributed under the terms of the Creative Commons Attribution-NonCommercial 4.0 International License (CC BY-NC 4.0)

Funding: This research did not receive any financial support

Competing Interests: The authors have declared that no competing interests exist

The presence of celiac trunk or hepatic arterial anomaly influences preservation of vascular arterial system and achievement of an R0 resection in the liver and pancreatic resection. The objective of this study is to review the literature, to describe the anomalous arterial variations of the celiac trunk and hepatic artery reiterating the importance of identification of the anomaly.

Introduction

The first description of normal and aberrant celiac trunk anatomy was published in 1756 by Haller. Lipshutz seems to have been the first who suggested a classification of the celiac trunk into four types. Later, Adachi presented a more detailed classification, while the two most commonly used classifications were suggested by Morita and Michels [1], [2], [3], [4], [5]. Knowledge of the variant vascular anatomy of upper gastrointestinal region is valuable to hepatobiliary surgeons to limit operative complications due to unexpected bleeding and to the achievement of R0 resection during liver or biliary tree resection or pancreaticoduodenectomy [6], [7]. It is defined typical 'normal', the hepatic artery that arises from celiac trunk and divides into three main branches- the right hepatic, left hepatic and middle hepatic supplying the right, left and the quadrate lobe of the liver

respectively. 'Aberrant' hepatic is a hepatic arising otherwise than from a typical celiac hepatic and is of two types accessory and replaced. The term 'accessory' hepatics should be used only in those cases where the normal celiac right or left hepatic is present, and there is an additional artery from other sources. When the normal celiac right or left hepatic artery is missing the replacing vessel coming from another source supplying the right or left lobe is to be termed as a 'replaced' right or left hepatic artery. The coeliac artery, also known as the celiac trunk (CT) or coeliac axis is the first ventral branch of the abdominal aorta. It is a short wide branch about 1.25 cm long, that arises from the aorta at the level of T12-L1 vertebrae immediately below the aortic hiatus of the diaphragm. The normal branching pattern of the CT and the three main branches are left gastric artery (LGA), common hepatic artery (CHA) and splenic artery (SA). The coeliac axis and its branches supply the derivatives of foregut, i.e. stomach, spleen,

pancreas, liver and part of the duodenum. The most common classical type of branching of CT is known as trifurcation and was first described by Haller in 1756 as tripus Halleri. The incidence of different celiac and hepatic artery anomalies was calculated depending on Uflacker's and Michel's classifications. According to the Michels' studies about the anatomical vascular anomaly, celiaco-mesenteric arterial aberrations is described in 22%-48% of observations [8], [9]. The literature suggests that the normal pattern of hepatic artery anatomy is observed in 55 to 79% of patients [11], [12], [13]. Since Michels published his first report, several studies have reported not only common and rare hepatic artery variants, but also different classifications [14] (Table 1).

Table 1: Michels and Hiatt classifications (from CT Angiography for Delineation of Celiac and Superior Mesenteric Artery Variants in Patients, Corinne B. Winston et al.) [28]

Hepatic arterial anatomy	Michels classification	Hiatt classification
Normal anatomy	Type I	Type I
LHA branch LGA	Type II	Type II
RHA branch SMA	Type III	Type III
Type I and II association	Type IV	Type II
LHA accessory LGA	Type V	Type II
RHA accessory SMA	Type VI	Type III
LHA accessory LGA + RHA accessory SMA	Type VII	Type IV
LHA accessory LGA+ RHA branch SMA	Type VIII	Type IV
CHA branch SMA	Type IX	Type V
RHA and LHA branch LGA	Type X	-----
CHA aorta branch	-----	Type VI

"-----"= liver variation not present in the corresponding classification column.
RHA=right hepatic artery; LHA=left hepatic artery; SMA=superior mesenteric artery; LGA = left gastric artery; CHA=common hepatic artery

Material and Methods

Study selection

A systematic search of the literature from PUBMED databases published between 1766 and 2018 was performed. The following search terms were used: celiac trunk, hepatic artery, anomaly, variants, normal hepatic artery, aberrant, accessory, Michels classification. A manual search was also carried out.

Inclusion and exclusion criteria

We retrospectively analysed 100 articles about Hepatic Artery (H.A) and Celiac Trunk Anatomic Variants (CTAV) using Pubmed research. Michels, Uflacker and Hiatt classifications were analyzed (Table 1, 2, 3). The inclusion criteria were: (1) papers are written in English; and (2) manuscript with 100 or more patients. Exclusion criteria: Abstracts, case reports, reviews, low-quality studies and non-comparative studies, and intraoperative data which were unable to be extracted from the published

studies were excluded. Here, we describe the most numerous medical records research articles and Michels classification images (Figure 1-9).

Results

Da Fonseca-Neto et al., [15] retrospectively analysed 479 medical records of transplanted adult patients in the 13 years. It was identified as normal hepatic arterial anatomy in 416 donors (86.84%). The other 63 patients (13.15%) showed some variation.

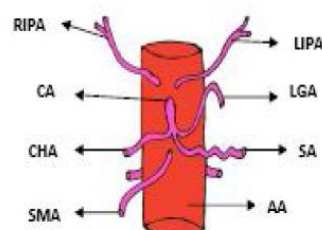


Figure 1: Usual branching pattern of celiac trunk. LGA, left gastric artery; SA, splenic artery; CHA, common hepatic artery; SMA, superior mesenteric artery; RIPA, right inferior phrenic artery; LIPA, left inferior phrenic artery; CA, celiac artery; AA, abdominal aorta

According to the Michels classification, the most frequently observed abnormalities were: right hepatic artery branch of superior mesenteric artery (Type III, n = 27, 5.63%); left hepatic artery branch of the left gastric artery (Type II, n = 13, 2.71%); right hepatic artery arising from the superior mesenteric artery associated with the left hepatic artery arising from the left gastric artery (Type IV, n = 4, 0.83%). Similarly, about Hiatt classification, the most prevalent changes were: right hepatic accessory artery or substitute of the superior mesenteric artery (Type III, n = 28, 6.05%), followed by liver ancillary left artery or replacement of gastric artery left (Type II, n = 16, 3.34%). Fourteen donors (2.92%) showed no anatomical abnormalities defined in classifications, the highest frequency being hepatomesenteric trunk identified in five (01.04%).

H. Gümüş et al., [16] Evaluated 820 patients who underwent angiography of the abdominal aorta. Anatomical findings were grouped according to the Michels classification. Several variations and/or anomalies were noted in 33.2% of the patients (n = 272). The most common abnormality was Michels type III (10.1%), followed by type V (7.3%), type II (4.7%) and others.

Kuo-Hsien Chiang et al., [17], reviewed 405 patients who underwent upper abdominal arteriography between Aug. 1998 and Sep. 2004. Hepatic artery anatomy was analyzed and classified according to Suzuki's classification. Single hepatic

artery group included 283 of 405 cases (69.9 per cent). Double hepatic artery group included 114 cases (28.1 per cent). Multiple hepatic artery group included 8 cases (2.0 per cent). Seventeen patterns were identified in this study.

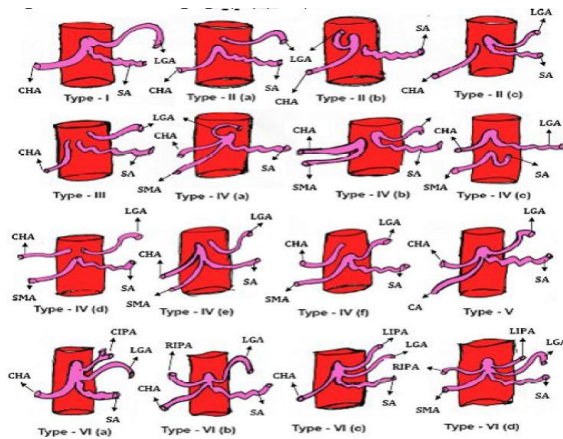


Figure 2: Schematic diagram showing variation in the origin of celiac trunk and its branches. LGA, left gastric artery; SA, splenic artery; CHA, common hepatic artery; SMA, superior mesenteric artery; RIPA, right inferior phrenic artery; LIPA, left inferior phrenic artery; CA, celiac artery; AA, abdominal aorta

MS Ugurel et al., [18] analysed retrospectively 100 patients. There was a coeliac trunk trifurcation in 89% and bifurcation in 8% of the cases. The coeliac trunk was absent in 1%, a hepatospleno-mesenteric trunk was seen in 1%, and a spleno-mesenteric trunk was present in 1%. Hepatic artery variation was present in 48% of patients. Coeliac trunk and/or hepatic arterial variation was present in 23 (39.7%) of the 58 patients with normal renal arteries, and 27 (64.3%) of the 42 patients with accessory renal arteries. There was a statistically significant correlation between renal artery variations and coeliac trunk–hepatic arterial system variations (p=0.015). They concluded that MDCT angiography permits a correct and detailed evaluation of hepatic and renal vascular anatomy.

Ahmed M. Osman MD et al., [19] retrospectively analysed 1285 Egyptian patients using triphasic CT or CT aortic angiography. The incidence of different coeliac and hepatic artery anomalies was calculated depending on Uflacker's and Michel's classifications. They found about 90.5% of the patients showing normal trifurcation pattern of the coeliac trunk (Uflacker type I) with the commonest variant was gastro-splenic trunk (Uflacker type V) with 4.3% incidence. The bifurcation pattern was representing 7.7% of cases. Regarding the hepatic artery, 74.3% of the cases showed the normal origin of the hepatic arteries (Michel type I) with the commonest anomaly was Michel type III with 12.5% incidence. Some cases are discovered not previously described by either Uflacker's or Michel's classifications. They concluded that good imaging quality of MSCT angiography had proved effectiveness in depicting different coeliac trunk and

hepatic artery variants.



Figure 1: Maximum intensity projection image on the coronal plane. Michel's classification type I hepatic artery anatomy. Celiac artery and its branches (SA, splenic artery, LGA; left gastric artery and CHA; common hepatic artery) are visible. CHA branches into the gastroduodenal artery (GDA), right hepatic artery (RHA), and left hepatic artery (LHA).

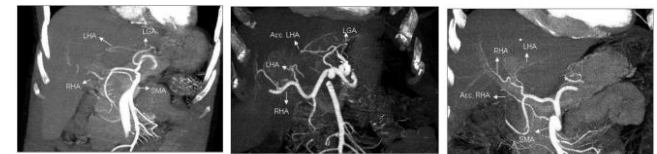


Figure 4: Maximum intensity projection image on the coronal oblique plane. Michel's classification type IV hepatic artery anatomy. Left hepatic artery (LHA) originates from the left gastric artery (LGA) and the right hepatic artery (RHA) originates from the superior mesenteric artery (SMA).



Figure 6: Maximum intensity projection image on the coronal plane. Michel's classification type VI hepatic artery anatomy. Accessory RHA (Acc. RHA) arising from superior mesenteric artery (SMA).

Figure 3: Variations of the coeliac trunk and hepatic arteries: a study with 64-detector computed tomographic angiography, H. GÜMÜS et al by European Review for Medical and Pharmaceutical Sciences (Fig. 1-9)

MK Tharao et al., [20] studied one hundred and two subhepatic regions in adult Kenyans by gross dissection for the pattern of arterial blood supply. Measurements were made for the distance of hepatic bifurcation from the liver. The common hepatic artery (CHA) originated from the coeliac trunk in 95.1% and the superior mesenteric artery (SMA) in 4.9% of cases. The mean distance of bifurcation from the liver was 2.6 cm, and the CHA gave rise to 2 hepatic branches in 93.1% of cases. The right hepatic artery (RHA) passed anterior to the CHD in 48%, posterior in 41.2% and 7.8% was related to the common bile duct (CBD). Accessory RHA and left hepatic arteries (LHA) were observed in 10.8% and 9.8% of the cases.

Jonathan R. Hiatt et al., [21], recorded of 1000 patients who underwent liver harvesting for orthotopic transplantation between 1984 and 1993 were reviewed. Arterial patterns in order of frequency included the normal Type 1 anatomy (n = 757), with the common hepatic artery arising from the coeliac axis to form the gastroduodenal and proper hepatic arteries and the proper hepatic dividing distally into right and left branches; Type 2 (n = 106), with a replaced or accessory right hepatic artery originating from the superior mesenteric artery; Type 3 (n = 106), with a replaced or accessory left hepatic artery arising from the left gastric artery; Type 4 (n = 23), with both right and left hepatic arteries arising from the superior mesenteric and left gastric arteries, respectively; Type 5 (n = 15), with the entire common hepatic artery arising as a branch of the superior mesenteric; and Type 6 (n = 2), with the common hepatic artery

originating directly from the aorta.

Fig. 1: Showing normal origin and branching pattern of hepatic artery.



[LGA- Left gastric artery, SA- Splenic artery, CHA- Common hepatic artery, HAP- Hepatic artery proper, RHA- Right hepatic artery, LHA- Left hepatic artery, CA- Cystic artery, GDA- Gastroduodenal Artery, PV- Portal vein, CBD- Common Bile Duct]

Fig. 2: Showing accessory left hepatic artery arising from left gastric artery and trifurcation of common hepatic artery.



[ALHA- Accessory left hepatic artery, RGA- Right gastric artery, CHD- Common hepatic duct]

Fig. 3: Showing combination of replaced right hepatic from celiac trunk and accessory left hepatic from left gastric artery.



[CT- Celiac trunk, MHA- Middle hepatic artery, ReRHA- Replaced right hepatic artery]

Figure 4: Variants in celiac trunk. From Kavitha Kamath. *B. Int J Anat Res* 201 [8]

A. Ahmed et al., [22], do a retrospective study in which 1000 post-contrast CT scans of the abdomen between July 2011 and June 2012. Out of the 10 Mitchel's hepatic arterial variations, 9 were seen. Type I was most common, and 678 (67%) patients had it. Type II variation was seen in 178 (17%) patients, type III in 34 (3.4%) type V in 25 (2.5%) patients.

Kavitha Kamath. B. [23], studied extrahepatic branching pattern of hepatic arteries in 40 embalmed cadavers. Classical textbook pattern of hepatic arterial anatomy was seen in 30(75%) cases, and ten (25%) cases showed the presence of aberrant hepatic arteries. 12 aberrant hepatic arteries were seen in these ten cases, eight (20%) cases with single aberrant hepatic artery and two (5%) with a combination of aberrant right and left hepatics. Aberrant right hepatic arteries were seen in four (10%) cases, and all of them were replaced right hepatics arising directly from the celiac trunk. Aberrant left hepatic arteries were seen in eight (20%) cases, of which six (15%) were accessory, two (5%) were replaced, and all of them arose from the left gastric artery.

Azhar Perwaiz et al., [24] analysed 200 consecutive pancreaticoduodenectomies finding Fifty-three patients (26.5%) that had arterial anomalies. The complexity of the surgery was determined by the

course of these arteries. The mean duration of surgery was 420 ± 32.0 minutes in patients with arterial anomalies versus 370 ± 38.5 minutes in those with normal arterial anatomy ($P = 0.005$). They concluded that during pancreaticoduodenectomy, arterial anomalies could increase operative complexity but do not usually compromise the safety of the procedure or its oncological outcome.

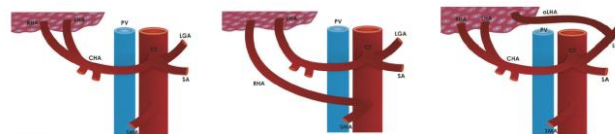


Figure 2: Type I normal anatomy according to Michel's classification (37% of cases). RHA- right hepatic artery, LHA- left hepatic artery, CHA- common hepatic artery, CT- celiac trunk, PV- portal vein, LGA- left gastric artery, SA- splenic artery, SMA- superior mesenteric artery.

Figure 3: Type III a replaced right hepatic artery according to Michel's (3.7% of cases). RHA- right hepatic artery, LHA- left hepatic artery, CHA- common hepatic artery, CT- celiac trunk, PV- portal vein, LGA- left gastric artery, SA- splenic artery, SMA- superior mesenteric artery.

Figure 4: Type V an accessory left hepatic artery according to Michel's (2.5% of cases). RHA- right hepatic artery, LHA- left hepatic artery, CHA- common hepatic artery, CT- celiac trunk, PV- portal vein, LGA- left gastric artery, SA- splenic artery, SMA- superior mesenteric artery, ALHA- accessory left hepatic artery.

Figure 4: Variants in celiac trunk. From George Nossios *J Clin Med Res.* 2017;9(4):248-252

George Nossios et al., [25], retrieved twenty articles. A total of 19,013 patients were analysed]. 81% of the cases displayed normal anatomy. A replaced right hepatic artery (RHA) arose from the superior mesenteric artery (SMA) in 3.7% of cases, while a replaced left hepatic artery (LHA) stemmed from the left gastric artery in 3% of cases. Both a replaced RHA and a left one were found in 0.8% of cases, while an accessory LHA and an accessory RHA were present in 3.2% and 1.6% of cases, respectively. A common hepatic artery (CHA) originating from the SMA appeared in 1.2% of cases. Finally, 784 cases (4.1%) encountered in were rare unreported anomalies or more commonly unclassified anomalies.

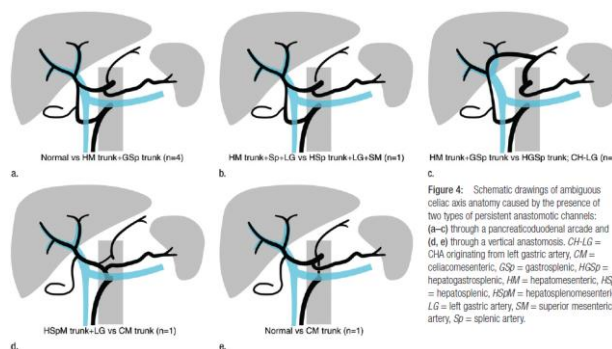


Figure 4: Schematic drawings of ambiguous celiac axis anatomy caused by the presence of two types of persistent anastomotic channels: (a-c) through a pancreaticoduodenal arcade and (d, e) through a vertical anastomosis. CH-LG = CHA originating from left gastric artery, CM = celiaomesenteric, GSp = gastrosplenic, HSp = hepatosplenic, HSpM = hepatomesenteric, LG = left gastric artery, SM = superior mesenteric artery, Sp = splenic artery.

Rafael Lo'pez-Andujar et al., [26], investigated the surgical anatomy of the extrahepatic arterial vascularisation prospectively in 1,081 cadaveric donor livers, transplanted from January 1991 to August 2004. The vascular anatomy of the hepatic grafts was classified according to Michels description. Anatomical variants of the classical pattern were detected in 30% of the livers (n 320). The most common variant was a replaced left artery arising from the left gastric artery (9.7%) followed by a replaced right hepatic artery arising from the superior mesenteric artery (7.8%).

Soon-Young Song et al., [27], retrospectively evaluated 5002 patients who underwent spiral CT and digital subtraction angiography (DSA). Of 15 possible types of CA variation, 13 types were identified. A normal CA was noted in 4457 (89.1%) of the 5002 patients. Twelve types of Celiac Axis (CA) variation were identified in 482 (9.64%) patients. In the remaining 63 (1.26%) patients, the CA anatomy was classified as ambiguous because the Common Hepatic Artery (CHA) was absent owing to separate origins of the hepatic arteries and the gastroduodenal artery ($n = 55$) or because the origin of the CHA could not be determined owing to persistent anastomotic channels ($n = 8$). Seven CHAs originating from the normal CA had a retroportal ($n = 6$) or transpancreatic ($n = 1$) course. All eight CHAs originating from the left gastric artery passed the fissure of the ligamentum venosum. The 148 CHAs originating from the superior mesenteric artery showed diverse relationships with the pancreas-being supra-, trans-, or intrapancreatic-and the superior mesenteric-portal venous axis-being pre- or retroportal. The 20 CHAs originating from the aorta had a normal suprapancreatic periportal course.

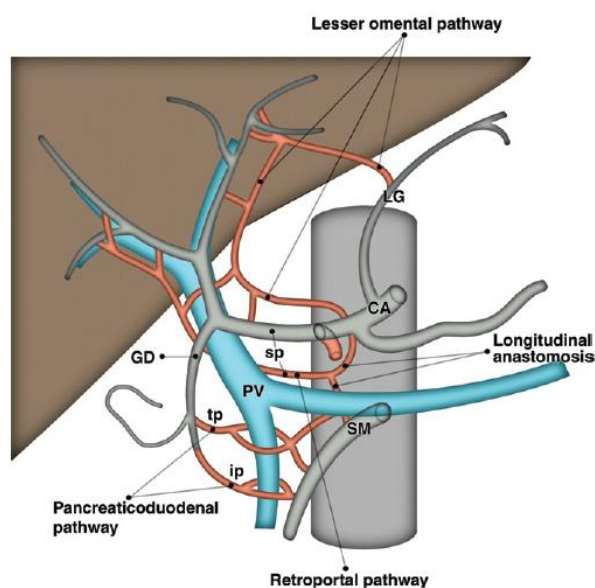


Figure 6: Schematic drawing illustrates hypothetical anatomic model to summarize possible anatomic courses of celiac axis and CHA variations. Gray indicates normal arterial anatomy. Red indicates possible anatomic course. CA, celiac axis; GD, gastroduodenal artery; ip, intrapancreatic course; LG, left gastric artery; PV, portal vein; SM, superior mesenteric artery; sp, suprapancreatic course; tp, transpancreatic course

Corinne B. Winston et al., [28], analyzed a CT Angiography (CTA) database from August 2001 to February 2003 that included 394 consecutive CT angiograms in 371 patients, all of whom were under consideration for surgical resection for a suspected pancreatic or hepatobiliary neoplasm. One hundred eighty-eight (51%) of the 371 patients had classic arterial anatomy identified at abdominal CT Angiography (CTA). One hundred sixty-two (44%) patients had a single arterial variant identified, and 21 (6%) patients had more than one arterial variant seen.

The most common variant identified was a replaced right hepatic artery originating from the superior mesenteric artery (SMA), which was seen in 54 (15%) patients. The second most common variant was a replaced left hepatic artery originating from the left gastric artery, seen in 30 (8%) patients. Variations in the origin of the common hepatic artery were seen in 12 (3%) patients. In six (2%) patients, the common hepatic artery originated from the SMA, and in six (2%) patients, the common hepatic artery originated from the abdominal aorta. A “double hepatic artery,” as described by Fasel et al., and Covey et al., refers to one or both hepatic arteries originating from the celiac axis or the aorta. This was seen in 15 (4%) of the patients in our study population. The right hepatic artery originated from the celiac axis in 13 (4%) patients and from the aorta in one (< 1%) patient. The left hepatic artery originated from the celiac axis in one (< 1%) patient. Accessory hepatic arteries were identified in 16 (4%) patients. We showed some examples of variants of hepatic artery (From Kavitha Kamath. B. Int J Anat Res 2015) (Figure 1, 2, 3, 4, and 5). We reported the figures reconstruction of celiac axis variants (From Dilli Babu E., Int J Anat Res 2013) (Figure 1, and 2).

Discussion

Modifications of the hepatic branch and the celiac axis, occur in 25% to 75% of cases. According to Michels classification, the most frequent change according to the literature is the type III present in from 6-15.5% of cases. It seems the most important because it has the potential to affect surgical procedures being indispensable its identification. The second most common is type II, reported in literature between 2.5-10%. Type IV is described with an incidence of 1-7.4%. The types VII, VIII, IX and X are rarely described in literature. [1], [2], [3], [4], [5], [6], [7], [8], [9], [10], [11], [12], [13], [14]. This is demonstrated from the figures (from George Nossios J Clin Med Res. 2017; 9(4):248-252) (Figure 2, 3, and 4). We found also schematic drawings of ambiguous celiac axis anatomy caused by the presence of two types of persistent anastomotic channels (From Soon-Young Song, MD Radiology: Volume 255: Number 1—April 2010) (Figure 4, and 7).

Conclusion

The precise knowledge of the celiac trunk and hepatic artery variants and anomalies is very important pre-surgical, prelaparoscopic or even pre-interventional. Unknowledge these variants produces

different technical difficulties, or challenges. It is essential in order to avoid damage, vascular surgical complications, and decrease the morbidity of patients [15], [16], [17], [18], [19], [20], [21], [22], [23], [24], [25], [26], [27], [28].

References

- Haller A. *Icones anatomicae in quibus aliquae partes corporis humani delineatae proponuntur et arteriarum potissimum historia continetur*. Gottingen, 1756.
- Lipshutz B. A Composite Study of the Coeliac Axis Artery. *Ann Surg.* 1917; 65(2):159-169. <https://doi.org/10.1097/00000658-191702000-00006> PMID:17863663 PMCID:PMC1426316
- Adachi B. *Das Arteriensystem der Japaner. Vol.2.* verlag der Kaiserlich- Japanischen Universitat zuKyoto, 1928.
- Morita M. Reports and conception of three anomalous cases on the area of the celiac and the superior mesenteric arteries. *Igaku Kenkyu (Acta Med)*. 1935; 9:159-172.
- Michels NA. *Blood supply and anatomy of the upper abdominal organs, with a descriptive atlas*. Lippincott, Philadelphia. 1955;139-143.
- Thapa PB, Yonjen TY, Maharjan DK, Shrestha SK. Anatomical Variations of Hepatic Artery in Patients Undergoing Pancreaticoduodenectomy. *Nepal Med Coll J.* 2016; 18(1-2):62-7.
- Tharao MK, Saidi H, Kitunguu P, Ogengo JA. Variant anatomy of the hepatic artery in adult Kenyans. *Eur J Anat.* 2007; 11(3):155-161.
- Kamath BK. A study of variant hepatic arterial anatomy and its relevance in current surgical practice. *Int J Anat Res.* 2015; 3(01):947-53. <https://doi.org/10.16965/ijar.2015.124>
- Dilli Babu E, Khrab P. Coeliac trunk variations: review with proposed new classification. *Int J Anat Res.* 2013; 1(3):165-70.
- Koops A, Wojciechowski B, Broering DC, Adam G, Krupski-Berdién G. Anatomic variations of the hepatic arteries in 604 selective celiac and superior mesenteric angiographies. *Surg Radiol Anat.* 2004; 26:239-44. <https://doi.org/10.1007/s00276-004-0229-z> PMID:14968265
- Covey AM, Brody LA, Maluccio MA, Getrajdman GI, Brown KT. Variant hepatic arterial anatomy revisited: digital subtraction angiography performed in 600 patients. *Radiology.* 2002; 224:542-7. <https://doi.org/10.1148/radiol.2242011283> PMID:12147854
- Michels NA. Newer anatomy of the liver and its variant blood supply and collateral circulation. *Am J Surg.* 1966; 112:337-47. [https://doi.org/10.1016/0002-9610\(66\)90201-7](https://doi.org/10.1016/0002-9610(66)90201-7)
- Soin AS, Friend PJ, Rasmussen A, Saxena R, Tokat Y, Alexander GJ, et al. Donor arterial variations in liver transplantation: management and outcome of 527 consecutive grafts. *Br J Surg* 1996; 83:637-41. <https://doi.org/10.1002/bjs.1800830515> PMID:8689206
- López-Andújar R, Moya A, Montalvá E, Berenguer M, De Juan M, San Juan F, Pareja E, Vila JJ, Orbis F, Prieto M, Mir J. Lessons learned from anatomic variants of the hepatic artery in 1,081 transplanted livers. *Liver transplantation.* 2007; 13(10):1401-4. <https://doi.org/10.1002/lt.21254> PMID:17902125
- Lima HC, Rabelo P, Amorim AG, Lacerda CM. Anatomic Variations of Hepatic Artery: A Study In 479 Liver Transplantations. *ABCD. Arquivos Brasileiros de Cirurgia Digestiva (São Paulo)*. 2017; 30(1):35-7. <https://doi.org/10.1590/0102-6720201700010010> PMID:28489166 PMCID:PMC5424684
- Gümüş H, et al., Variations of the celiac trunk and hepatic arteries: a study with 64-detector computed tomographic angiography *European Review for Medical and Pharmacological Sciences* 2013; 17:1636-1641.
- Kuo-Hsien C, et al. Angiographic Evaluation of Hepatic Artery Variations in 405 cases, *Chin J Radiol.* 2005; 30:75-81.
- Ugurel MS, Battal B, Bozlar U, Nural MS, Tasar M, Ors F, Saglam M, Karademir I. Anatomical variations of hepatic arterial system, coeliac trunk and renal arteries: an analysis with multidetector CT angiography. *The British journal of radiology.* 2010; 83(992):661-7. <https://doi.org/10.1259/bjr/21236482> PMID:20551256 PMCID:PMC3473504
- Osman AM, Abdrabou A. Celiac trunk and hepatic artery variants: A retrospective preliminary MSCT report among Egyptian patients. *The Egyptian Journal of Radiology and Nuclear Medicine.* 2016; 47(4):1451-8. <https://doi.org/10.1016/j.ejrm.2016.09.011>
- Tharao MK, Saidi H, Kitunguu P, Julius OA. Variant anatomy of the hepatic artery in adult Kenyans. *European Journal of Anatomy.* 2019; 11(3):155-61.
- Hiatt JR, Gabbay J, Busuttill RW. Surgical anatomy of the hepatic arteries in 1000 cases. *Annals of surgery.* 1994; 220(1):50-52. <https://doi.org/10.1097/00000658-199407000-00008> PMID:8024358 PMCID:PMC1234286
- Ahmed A. Hepatic Arterial Variations And Its Implications On Hepatobiliary Surgery Awais Ahmed, Rashed Nazir, Rayyan Pervez, Umar Amin, Sadia Babar, Atif Rana. Department of Radiology, Shifa International hospital, Islamabad, Pakistan. *European Congress of Radiology* 2013.
- Covey AM, Brody LA, Maluccio MA, Getrajdman GI, Brown KT. Variant hepatic arterial anatomy revisited: digital subtraction angiography performed in 600 patients. *Radiology.* 2002; 224(2):542-7. <https://doi.org/10.1148/radiol.2242011283> PMID:12147854
- Perwaiz A, Singh A, Singh T, Chaudhary A. Incidence and Management of Arterial Anomalies in Patients Undergoing Pancreaticoduodenectomy. *JOP. J Pancreas.* 2010; 11(1):25-30.
- Noussios G, Dimitriou I, Chatzis I, Katsourakis A. The main anatomic variations of the hepatic artery and their importance in surgical practice: review of the literature. *J Clin Med Res.* 2017; 9(4):248-252. <https://doi.org/10.14740/jocmr2902w> PMID:28270883 PMCID:PMC5330766
- López-Andújar R, Moya A, Montalvá E, Berenguer M, De Juan M, San Juan F, Pareja E, Vila JJ, Orbis F, Prieto M, Mir J. Lessons learned from anatomic variants of the hepatic artery in 1,081 transplanted livers. *Liver transplantation.* 2007; 13(10):1401-4. <https://doi.org/10.1002/lt.21254> PMID:17902125
- Song SY, Chung JW, Yin YH, Jae HJ, Kim HC, Jeon UB, Cho BH, So YH, Park JH. Celiac axis and common hepatic artery variations in 5002 patients: systematic analysis with spiral CT and DSA. *Radiology.* 2010; 255(1):278-88. <https://doi.org/10.1148/radiol.09090389> PMID:20308464
- Winston CB, Lee NA, Jarnagin WR, Teitcher J, DeMatteo RP, Fong Y, Blumgart LH. CT angiography for delineation of celiac and superior mesenteric artery variants in patients undergoing hepatobiliary and pancreatic surgery. *American Journal of Roentgenology.* 2007; 189(1):W13-9. <https://doi.org/10.2214/AJR.04.1374> PMID:17579128